



Commonwealth

1754 sq. ft. | 3 Bedroom | 2 Bath

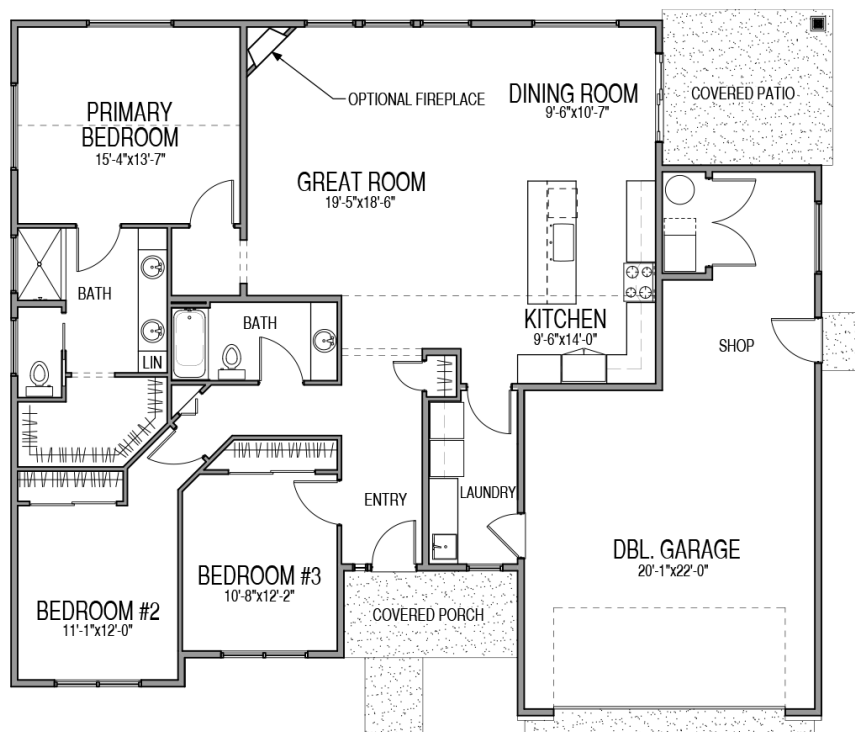
Everyday Practicality with Added Flexibility

The Commonwealth welcomes you home beneath a covered front porch and into a defined entry that keeps the elements where they belong. From here, the layout guides you comfortably toward the main living areas, while Bedrooms 2 and 3 are positioned together with a shared bath—ideal for guests, grandkids, or a dedicated office and hobby space.

For daily routines, most will appreciate the convenient access from the 2.5-car garage. Entry through the laundry room leads directly into the kitchen, with a nearby pantry that simplifies unloading groceries and staying organized. The attached shop adds valuable flexibility, offering space for projects, storage, or outdoor gear without compromising garage functionality.

At the heart of the home, the open-concept great room connects seamlessly to the kitchen and dining area. A uniquely shaped island faces the living space, encouraging conversation and connection while cooking or entertaining. The dining room sits at the rear with direct access to the covered patio, making indoor-outdoor living natural and convenient.

Privately located beyond the main living area, the primary suite offers a comfortable retreat with a walk-in closet and dual-sink bath. With secondary bedrooms thoughtfully separated, the Commonwealth delivers single-level living that balances openness, organization, and the added versatility of a dedicated shop space.



CALL US AT (541) 330-5463 FOR MORE INFORMATION

newerahomes.com